

OPEN ACCESS



Journal of
**Stored Products and
Postharvest Research**

January 2019
ISSN 2141-6567
DOI: 10.5897/JSPPR
www.academicjournals.org



**ACADEMIC
JOURNALS**
expand your knowledge

ABOUT JSPPR

The Journal of Stored Products and Postharvest Research (JSPPR) is published monthly (one volume per year) by Academic Journals.

The Journal of Stored Products and Postharvest Research (JSPPR) is an open access journal that provides rapid publication (monthly) of articles in all areas of the subject such as Biological control of rot-inducing fungi, Post harvest losses of rice from harvesting to milling, Genetic variability studies between released varieties of cassava, Seed borne pathogens on farmer-saved sorghum etc.

The Journal welcomes the submission of manuscripts that meet the general criteria of significance and scientific excellence. Papers will be published shortly after acceptance. All articles published in JSPPR are peer-reviewed.

Contact Us

Editorial Office: jsppr@academicjournals.org

Help Desk: helpdesk@academicjournals.org

Website: <http://www.academicjournals.org/journal/JSPPR>

Submit manuscript online <http://ms.academicjournals.me/>

Editors

Dr. Dalbir Singh Sogi

Department of Food Science and Technology
Guru Nanak Dev University Amritsar 143 005
India

Dr. Raquel Lima Miranda

397 O St SW Washington DC 20024
USA.

Dr. Héctor Eduardo Martínez Flores

Division of Graduate Studies of the Chemical Pharmacology
Faculty Universidad Michoacana de San Nicolás de Hidalgo
Mexico.

Dr. Naveen Kumar

University of Florida
Southwest Florida Research and Education Centre
USA.

Editorial Board

Prof. N.M. Nnam

Department of Home Science Nutrition and Dietetics
University of Nigeria Nsukka
Nigeria

Dr. Sunil Pareek

Department of Horticulture
Rajasthan College of Agriculture
Maharana Pratap University of Agriculture and Technology
Udaipur, Rajasthan, 313001
India

Dr. K.A. Raveesha

Department of Studies in Botany
University of Mysore
Manasagangotri
Mysore-570 006
India

Dr. M.M. Prasad

Central Institute of Fisheries Technology
Visakhapatnam Research Centre
India

Dr. Charles Fokunang

Department of Pharmacy
Faculty of Medicine and Biomedical Sciences
University of Yaounde
Cameroon.

Dr.Zachée Ngoko

Institute for Agricultural Research and Development (IRAD)
Bambui, Box 80 Bamenda
Cameroon

Dr.Zachée Ngoko

Institute for Agricultural Research and Development (IRAD)
Bambui, Box 80 Bamenda
Cameroon

Dr. Mahbub Hasan

Department of Zoology
Rajshahi University
Rajshahi-6205
Bangladesh

Dr. Mohamed A. Eltawil

Agric. Engineering Department
Kafrelsheikh University
Egypt

Dr. Younes Rezaee Danesh

Department of Plant Protection
Faculty of Agriculture
Urmia University
Iran

Journal of Stored Products and Postharvest Research

Table of Contents: Volume 10 Number 1 January 2019

ARTICLES

- Post-harvest losses in maize store-time and marketing model perspectives in Sub-Saharan Africa** **1**
Jennifer Swai, Ernest R. Mbega, Arnold Mushongi and Patrick A. Ndakidemi
- Postharvest loss assessment of maize (Zea mays) along its value chain in Nigeria** **13**
Kitinoja Lisa, Dandago Munir Abba and Abdullahi Nura

Review

Post-harvest losses in maize store-time and marketing model perspectives in Sub-Saharan Africa

Jennifer Swai^{1,3*}, Ernest R. Mbega¹, Arnold Mushongi² and Patrick A. Ndakidemi¹

¹Department of Sustainable Agriculture, Biodiversity and Ecosystem Management, School of Life Science and Bio-engineering, The Nelson Mandela African Institution of Science and Technology, P. O. Box 447, Arusha, Tanzania.

²Department of Crop Science, Tanzania Agricultural Research Institute Ilonga, Private Bag, Morogoro, Tanzania.

³Ministry of Agriculture, Department of Land Use Planning and Management, P. O. Box 400, Mbeya, Tanzania.

Received 7 September, 2018; Accepted 23 October, 2018

Post-harvest losses of maize are almost half of the produced grains in Sub-Saharan Africa. Efforts to reverse this trend are recommended. Thus, there is a prerequisite to create a post-harvest loss resilient strategy to guide small scale maize growing farmers in Africa. In this review, critical elements underlying post-harvest losses in Africa such as infestation by insect-pests, microbes, rodents, poor transportation infrastructure, poor storage facilities, injudicious store-time and unjustified marketing models have been discussed. Furthermore, we have proposed options for mitigating the post-harvest damage by highlighting possible pathways for farmers' friendly resilient strategies and areas needing research to eventually minimize post-harvest losses of maize in Sub Saharan Africa

Key words: Storage techniques, marketing prices, trade ban, spatial market, food security.

INTRODUCTION

Maize ranks next to wheat and rice in cereal production worldwide (Suleiman and Rosentrater, 2015), therefore becomes important crop in terms of food security. It contributes to per capita energy consumption and incomes especially in the developing countries (Muir et al., 2010), considering it as a cash crop as well as food crop. Recently, world maize production is about 10.14 billion MT (Suleiman and Rosentrater, 2015). The United States of America is the chief producer of maize, with over 30%; China, 21%; Brazil, 7.9% and Africa contributing about 7% of overall world production of grain

maize. Two-thirds of all maize produced in Africa is from Eastern and Southern Africa (Verheye, 2010; Ranum et al., 2014). In Sub-Saharan Africa (SSA), about 1.2 billion people depend highly on maize as major cereal crop and staple food, thus occupies about one third of total land cultivated (Blackie, 1990). This justifies the importance of crop and farmers' commitment toward its production as well. Maize accounts for over 30% of the small-holder farmer earnings which adds-up to 60% of dietetic supplement in which protein accounts for 50% (Suleiman and Rosentrater, 2015; Amani, 2004). However, despite

*Corresponding author. Email: jenifaswai60@gmail.com.

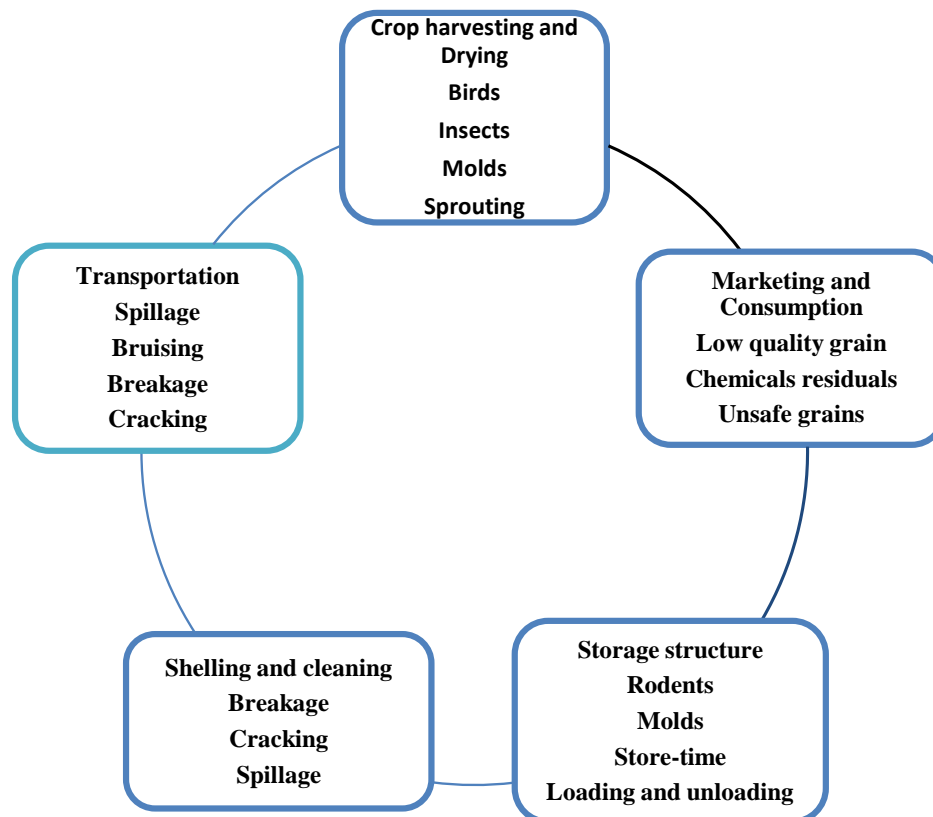


Figure 1. Post-harvest pipeline and pertaining to grain losses factors - a theoretical framework.

this contribution, there is significant post-harvest loss ranging from 12-46% of the harvested maize all along its production chain, that is harvesting (4-8%), transportation (2-4%), drying (1-2%), threshing and winnowing (1-3%), storage (2-25%) and marketing (2-4%) (Matthews, 2006; Hodges and Bernard, 2014). Inefficiencies along any of the production chain will result in maize post-harvest loss whereby among other aspects storage loss has a role. Such post-harvest losses call for urgent actions including designing post-harvest resilient strategies to be used by maize growers in Sub Saharan Africa. In this review, we provide comprehensive information on aspects underwriting grain losses and propose a farmers' friendly resilient strategy for minimizing post-harvest loss of maize grains in the Sub Saharan Africa.

REVIEW METHODS

Information presented in this paper has been collected with the aid of Mendeley and Google scholar databanks guided with some key words like "Post-harvest loss", "food security", "marketing model", "marketing chain", "storage structure", "maize production" and "improved storage structures". Throughout the development of this review paper, post-harvest loss, store-time and marketing model

were used interchangeably for a clear information searching. Studies obtained focus on the contributions of biotic and abiotic factors in maize post-harvest loss, operating maize marketing models, assessment of maize value chain, maize production trends and maize price trends, efficiencies in maize storage structures.

MAIZE POST-HARVEST PIPELINE IN RELATION TO GRAIN LOSS

Maize post-harvest handling arises shortly next to reaping from field drying and harvesting, transportation, shelling and winnowing, storage, marketing and finally consumption. Inefficiency in any of the after-harvest channel can result in grain loss as presented in the theoretical framework (Figure 1).

CAUSES OF MAIZE POSTHARVEST LOSSES IN SSA

The term 'post-harvest loss' (PHL) refers to assessable numerical qualitative and economics of grain loss across the post-harvest pipeline due to rodents, insects, mites, and fungi (Aulakh nd Regmi, 2013; Tafera, 2012). All the causative agents should be weighted equally in order to

minimize losses. Matthews (2006) asserts that these losses may happen when the grain is dispersed or leaked, or in the processes of bio deterioration where grain becomes rotten following mold attack or, is physically consumed by pests like insects, rats or birds. It involves both biotic and abiotic factors which contribute highly to physical value deteriorations of maize grain resulting in poor marketing. Furthermore, Wagacha and Muthomi (2008) add that, loss of grain quality may also encompass decline in dietary value and mold growth leading to toxins, e.g. aflatoxins in high moisture content incidence. Considering these, farmers need to be well equipped with improved drying facilities instead of relying on sun drying during pre and post-harvest to attain safe storage grain moisture level which discourages fungus growth and minimizes aflatoxin. Most of grain damage losses are the combination of various externally functions of antagonistic factors. Post-harvest losses in Africa are often projected to fall within a range of 62% along its value chain, that is, handling and storage, 37%; processing, 7%; distribution and marketing, 13%; consumption, 5% (Lipinski et al., 2013); thus, much efforts should be geared on improving road infrastructure to enhance marketing and distributions, and provide farmers with proper packaging facilities to minimize losses. Storage facilities need to be given much attention for contributes to high post-harvest loss; stabilizes food demand and supply based on storage-time. As a matter of fact, post-harvest loss decline will definitely result in increasing food availability without calling for excess factors of production, hence, competence in use of resources in SSA and Africa at large (Hodges et al, 2011). This achievement cannot be made without a proper and an improved grain (maize) store-time strategy together with its marketing models. Hence, the storage-time and marketing model needs to be given enough consideration as a way forward toward supporting the use of tool to safeguard diet security in the region.

Losses due to poor harvesting techniques

Under normal circumstances most grains have a single harvesting season except in bimodal rainfall areas, to name some examples; Togo, Benin, Nigeria, Ivory Coast and Ghana. Basically, maize get matures physiologically 7–8 weeks following blossoming, with moisture ranging from 30–40% and maximum dry weight. This makes grains subject to beetle irritation (Kaaya et al., 2005). This is an issue based on the fact that, storage is the major activity following harvesting for most SSA farmers; at the same time, farmers do not know how to use proper techniques for lowering maize grain moisture before storage, cannot access the recommended moisture meters and thus rely on the indigenous techniques such as bare hand, kennels biting and salt tests. Based on the fact asserted by Hodges et al. (2011) that, wet condition

during harvesting periods reduces the value of kernels before storage, fosters early insect pest and microbial infestation signifying huge maize grain loss. Thus, farmers should plan in advance so as to accommodate harvesting exercise well and timely to minimize loss as reported by Boxall (1986) that, if harvesting delays, the matured grain will severely be affected by insects, attacked by fungi, bacteria and vertebrate pest and become more exposed to store insect pest outbreak; this increases the chances of being contaminated by *Aspergillus*-produced aflatoxin in maize sinking grain quality (Kaaya et al., 2005). Following Kaaya et al. (2005)'s line of thinking , aflatoxin levels may be raised from 4-fold to 7-fold within 3 and 4 weeks of harvesting overdue respectively, leading to maize qualitative losses. In SSA, the degree of losses in traditional methods of grain drying and harvesting varies from country to country as it has been observed in Swaziland and Zimbabwe with losses of about 16.3 and 5.8–9.5% respectively (Tefera et al., 2011). To cut down these losses; grains ought to be harvested timely with favorable harvesting condition. Nevertheless, the exercise must begin when farmer is confident of maximizing earnings; seeing maize price yield potentiality, span of harvesting period, dominant reaping weather conditions, and other related costs that is equipment, labor, and energy. Farmers should be well informed of the maize maturity cycle instead of depending on the physiological maturity, and agronomic aspects. It is highly acclaimed that; farmers should reap maize at most 3 weeks following full maturity. Actually, it would have been better to integrate traditional and improved harvesting techniques such as combined harvesters to minimize yield mortalities and rescue human health as far as aflatoxin is concerned.

Losses due to drying methods and operations (field and on-farm)

Most farmers in Africa, equally minor and major scale, highly depend almost absolutely on natural drying of crops that is combination of sunshine and movement of atmospheric air through the product as their regular drying techniques. At most 12% grain moisture content considered as a safe level is attributed to unfavorable environment for insects to feed and reproduce themselves (Harris and Lindblad, 1977). Regardless of these, there remains a big challenge among SSA farmers due to lack of enough capital to purchase the recommended oven and drying equipment. It has been reported by Basavaraja et al. (2007) in India-Karnataka that, losses due to drying operation in grains were assessed to be 0.80 kg/0.1 ton in rice and 0.66 kg/0.1 ton in wheat in the course of farmers customary drying procedures. Considering the biology of maize as grain compared to wheat, higher estimates of PHL may be realized in maize. Proper timing of all necessary activities

involved in the production cycle is crucial to overcome the losses. This can only be done under close supervision and accessible extension services as part of farmers' decision supporting tools.

Usually, greatest damage occurs during re-wetting, specifically, if grains of different wetness ranks are mixed together in the same dryer simultaneously, and when rain or dew re-wets grain in a yard (Harris and Lindblad, 1977). Farmers should have enough dryers to avoid this mixture; with greater precautions on climatic dynamics during maize grains drying. Dehydrating the grain to optimum humidity and proper pest management strategies would minimize loss. However, it cannot stand alone as a medication counter to entirely PHL because birds, rodents, and insects may spell a completely dried prior to harvest and on store (Hodges and Bernard, 2014). This suggests that, proper minimization of PHL is a function of good pre and post-harvest practices. Therefore, farmers are advised to understand this synergetic relationship to get minimize PHL to the maximum for food and trade.

Losses due to storage structures

Maize storage plays a role food supply series besides post-harvest pipeline; it plays a great role in food security stability as far as seasonality is concerned. In most cases, soon after harvest; grains are subjected to storage for either short or long period as food reserves and/ or seeds. Surprisingly, maximum losses amounting to approximately 40% to total loss may happen during this operation (Aulakh and Regmi, 2013; Majumder et al., 2016); poor storage facilities used by farmers is the main cause. A study conducted by Tefera and Abass, (2012) and Costa (2014) reported that, farmers are using traditional storage structures such as granary/ polypropylene bags which are exceedingly prone to pest invasion, leading to PHL of about 48–59% in maize grains after being exposed to storage for 90 days. Regarding this trend, the efforts devoted by farmers will end up in feeding insects instead of the intended community. Regardless of the accessibility to improved storage facilities, farmers should be well informed of the safe grain moisture level before exposing grain to storage to balance the interface of moisture and temperature as key to sustain grain quality and best price as well. Thus, it is highly recommended harvested crops to be dried to safer moisture levels of 10–13% for cereals and 7–8% for oil seeds almost immediately after harvesting (Waliyar et al., 2015). Despite the fact that, molds can grow over an extensive array of temperatures, growth rate is lower with lower temperature and less water availability. Proctor (1994) asserts that grain maize might be kept for a year at a moisture level of 15% and a temperature of 15 °C without any fungal development; nevertheless, the similar maize exposed to 30°C as storage temperature may

result in significantly destruction initiated by fungi just three months later. Hence, farmers' understanding of the biophysical component of the maize storage ecosystem is key to minimizing PHL and they should bear in mind that grains need to be dried separately from the farm with little interface with the ground to reduce fungal contamination during storage. The physical, inorganic and organic characteristics of grain in ecofriendly settings during growth, harvesting methods and handling practices prior to storage influence storability (Zhang, et al; 1992). Farmers should put ample work on grain sorting to minimize threat debris, broken seeds, chaff and dust to improve aeration in store.

Losses due to attack by fungi pathogens

Attack by fungi in the field

As the name suggests, field fungi are principally responsible for grains contaminations in the field mostly before or after ripeness earlier to harvest. To list some, are *Alternaria*, *Cladosporium*, *Fusarium*, *Helminthosporium*, and *Pullularia*. Their favorable growing conditions are relative high humidity (>90%) and moisture content of 24–25% wet-weight or about 30–33% dry-weight in the starchy cereal (Koehler, 1938); therefore they hardly arise in the low moistness and low oxygen environments post-ensiling. Settlement of field fungi can be observed in already damaged kernels which serve as reservoir for the coming season; the same case might happen on the soil as well. Soon after harvest maize grain or seed become inactive due to drying; at this stage grain moisture content and grain temperature become the main dictators for fungal further development. In most cases, field fungi as primary invaders are not likely to continue their development in, or to reinvade grains once they have been dried and then remoistened, or formerly subjugated by other fungi. Furthermore, poor storage technique attracts further fungi development, for example, unshelled maize stored on the cob in cribs and exposed to wet might be invaded by fungi with high moisture requirements, comprising typical field fungi referring to "advanced-decay fungi" (Christensen, 1957). It is worth noting that, fumonisins can be produced during post-harvest when storage conditions are inadequate. SSA farmers should be well informed of the combination of pre-harvest cultural practices such as, seed selection, crop rotation, land cleaning and preparations management, insect and pest management practices and all other necessary Integrated Pest Management practices to minimize PHL resulting from field fungi. Soon after harvest grains need to be stored with a safe moisture contents below those required by the field fungi to discourage further growth. Hence, proper storage equipment with a justifiable store-time should be readily available to SSA farmers to cut

down losses.

Loss due to storage fungi

The PHL of maize in humid nations is donated by biological and environmental factors, for this case, insect pest and molds are among the biotic factors (Muir et al., 2010) whereas abiotic aspects are moistness and hotness (Giorni et al., 2008). The interface between these elements determines the occurrence of mold/fungi community and their relative development during storage (Cairns–Fuller et al., 2005); hence, there should be a clear match between these interactions. The storage fungi comprise mainly, several species of *Aspergillus*, particularly those in the *Aspergillus glaucus* group (Warcup, 1951), such as *Aspergillus amstelodami*, *Aspergillus chevalieri*, *Aspergillus repens*, *Aspergillus restrictus*, and *Aspergillus ruber*, plus *Aspergillus caltididus*, *Aspergillus ochraceus*, and *Aspergillus flavus*. Key varieties of PHL as a result of storage fungi are; decrease in germination percentage; grain quality deterioration, grain biochemical changes and toxins that constitute healthy risks for human being and animals. Furthermore, fungal contamination in maize as animal feed, diminishing its dietary value and tastiness, promotes allergenic possibilities resulting in animal health problems, reduction in production and fertility, increased chances to diseases which later on reflect on human health and their livelihood. A study conducted by Ariño et al, (2007) stipulated that, most important fungal genera is *Fusarium* with inclusion of many pathogenic species responsible for broad range of plant diseases, contrary to others which are highly mycotoxigenic. Storage fungi are a risk to human and animal wellbeing being a causative agent of carcinogenic toxins. Additionally, already invaded maize by storage fungi deteriorates much more rapidly after being stored under favorable environment meant for fungi breed contrary to the ones not invaded (Christensen and Kaufmann, 1969). Therefore, it is highly emphasized that growers should be well familiar and be expertise related to storage fungi to reduce PHL and raise their income level other than improving their livelihood.

Losses due to termites

In SSA, the fungi–growing termites such as *Microtermes* spp., *Macrotermes* spp. and *Odontotermesspp* (Macrotermitinae) are among the central constraints in maize (Sekamatte et al., 2003). The *Macrotermitinae* are fungus growers' termite, widely dispersed all over the world except at high altitude and in desert area (Singleton et al; 2003; Wood et al 1989). Termite damage to maize commences at seedling stage and increases at the arrival of senescence (Riekert and Berg, 2003). In most cases,

termites feed on dead plants materials although some might feed on fresh plants materials leading to a serious PHL particularly in semi–arid climatic regions. Furthermore, termite attack is more severe in prior diseased crops similar to physiologically damage crops specifically in water stressed areas and in the lowland crops (Riekert and Berg, 2003). What is more, termite attack in maize is severe in the high humidity fields. In particular, crops are often damaged close to harvest than early in the season (Wood et al., 1989) For that reason, delay in harvest might bring loss through lodging especially in maize. In this regard, insecticides apart from persistent organochlorides that could be applied correctively at somewhat late plant growth stages, or preventative treatments will contribute towards cost–effective maize production particularly in areas susceptible to termites. Some of these insecticides may however be too expensive, especially in marginal crop production areas where termite infestations usually occur; in which case, its subsidization will beyond doubt accelerate its demand.

Losses due to common storage insect pests

In most developing countries, storage pests cause substantial economic losses (Boxall, 2002; World Bank, 2011). Insects contribute highly to PHL through boring within the kernels and feeding on the surfaces, remove food and selectively consume nutritive components, encouraging higher moisture in the grain while promoting the development of microorganisms. These bring up essential insect pests for stored maize. Biophysical conditions of grain maize before and after harvesting in the cause of practices involved will have a final bearing on its susceptibility toward beetle pest occurrence during storage. The common grain insect pests are; the lesser grain borer (*Rhyzopertha dominica*), maize weevil (*Sitophilus zeamais*), and red flour beetle (*Tribolium castaneum*) (Dowell and Dowell, 2017). Additionally, *Sitophilus* (Curculionidae), *Tribolium* (Tenebrionidae), *Sitotroga cerealella* (Grain Moth), Grain Weevil *Sitophilus granarius* (L.) are prime storage pests in SSA (Dick, 1988; Holst et al., 2000). Above all of the earlier mentioned storage insect pests, in SSA, the chief grain storage beetle pest is the Larger Grain Borer (LGB) *Prostephanus truncatus* (Horn), (Bostrichidae), inborn in Mexico and Central America, which has been established in East and West Africa (Nyambo, 2008, Markha et al., 1994). This beetle is currently a more serious pest of stored maize and cassava in most parts of SSA than its innate Central America (Dick, 1988) with a significant contribution to PHL and food insecurity. Actually, in Ethiopia, one way to inhibit invasion of storage insect pest in maize is to combine with teff, which seals the inter–granular spaces precluding insect pest devastation (Haile, 2006). Definitely, the circumstance with maize is

more diverse as it may or may not be infested by LGB. It has been documented that, storage pest contributes about 4-5% weight loss, where by LGB accounts for more than twice of the weight loss (Hodges, 1983; Dick K, 1988, Boxall, 2002) and a total loss for unchecked maize grain. Basically, primary basis of weight loss of *P. truncatus* is the alteration of the maize grains into dust by mature digging. Cowley et al. (1980) detected that in a separate cluster sample whereby adults were retained on alleviated grains over 42 days; adults were the core grounds of the maize grain destruction until grains became flour to the extreme. Hodges (1986) asserts that, till a massive number of larvae have been proven; feeding activity seems to be of lesser meaning as source of loss. For this matter, *P. truncatus* may differ from other storage pest species, such as *zeamais*, whereby larval feeding is accountable for the common injury. Additionally, a study steered in Tanzania (Suleiman and Rosentrater, 2015) shows that; farmers storing cassava and maize in Tabora region experience a severe damage up to 30% of the stored grains and some experience extreme case, whereby, grains were fit for neither seed nor consumption; it was regarded as total loss just 90 to 180 days of storage. It was caused by unfamiliar beetle subsequently identified a *P. truncatus*.

Apart from grain loss, some grain-infesting insects harbor in their gut potentially harmful bacteria, such as pathogenic *Salmonella* (a common cause of food poisoning, found in feces), hemolytic *Streptococcus*, and *Escherichia coli* (also from feces), and they may well harbor also viruses capable of infecting man or his domestic animals (Christensen and Kaufmann, 1969). Most of literatures suggest that, shelling grain and storing in sacks (as well as addition of insecticide) are the standard recommendations to moderate injuries resulting from LGB attack. Perversely, agriculturalists in SSA are facing problems of accessing the recommended pesticides of the original quality at reasonable price, whereby some farmers have been experiencing grain loss regardless of insecticide applications; hence the problem remains unsolved. Additionally, farmers lack knowledge of the precise chemical, right timing, right dosage and right place/location in the application of insecticides. All these have led to non-judicious use of insecticide including threats to human and livestock health, impaired trade due to insecticide residues, water pollution and biodiversity loss. Therefore, designing an improved maize marketing model with justifiable store-time would be a solution to justify the storage cost and expected return to investment to speed up maize investments. A successful store-time model may serve as a decision supporting tool for scaling up widely to appropriate areas.

Losses due to rodents

Rodents might cause interminable destruction and waste

to stored food attributable to their stools, urine, saliva and fur leading to quality deterioration, possible disease spread and boost grains' vulnerability to fungal and bacterial invasions throughout storage (Taylor et al., 2012). Mostly, outbreak of mice contributes highly to post-harvest loss very quickly correlating further with biotic factor. Rodents among other pests, establish one small, but major, portion in the massive of post-harvest loss riddle (Green, 1977); though some farmers pay little or no attentions in eradicating them, rather count them as part of their community. The extent of food losses due to rodent all over the world is least estimated to be 30% (Ennis et al., 2016), which is contrary to SSA as documented by Food and Agriculture Organization of the United Nations (FAO) news release (March, 1967). Furthermore; Taylor et al. (2012) quantify the unit of storage maize kernels destruction brought by rodent to be up to 35% of the stored grains; almost similar conclusion drawn by FAO (2009) that, in SSA rodent destructions significantly contributes to around 1.3 million tons of food loss annually. Awareness creations on the magnitude of rodent destructions should be made to farmers so that they can no longer take them as a normal thing but fight against them. Taylor et al. (2012) testify of a severe destruction of grains caused by rodent donates to food famine in rural societies of Tanzania along with their monetary losses. As asserted by Singleton et al. (2003) that, this sum of missing maize kernel as a result of rodent destructions would be sufficient to feed 7 million folks for a year at a rate of 0.5 kg/day/person with a projected value of 141.7 million USD that is 11.1 US\$ for every 100 kg. It is worth enough to invest wasted amount of money on other income generating activities to boost up rural communities livelihood rather than feeding rodents. Necessary effort needs to be put in investigating the costs benefits ratio of the improved grain storage structure versus other rodent management practices together with the final grain quality; this can stop the damages caused by rodents to secure people's health status and economic losses as well as maize agribusiness.

Losses during transportation (farm to households and households to market)

The general task of the supply chain is to exchange grain competently from the production area (farm) to the consumption area (market) at a rate and with favorite quality that meets the users' desires. In most least developing countries where majority of SSA belong, smallholder farmers are extremely affected by shipping costs due to undersized roads particularly rural feeder roads; this marks extraordinary shipping expenses (Isinika et al., 2003). Therefore, the movement of grain from farm to home/store is regularly by head load or bicycle and in some places, by animal-drawn carts which are considered to be inefficient. As a matter of fact,

during the process, leakage of bags or transport vehicles might occur resulting in grain loss along the way. Although such losses might sound very insignificant, interventions need to be in place to certify that losses during transportation from the production sites to the households and to the market places are minimized. Inefficiencies in transportation lead to unreasonable store-time and encourage farm gate prices, hence lower down return to investment.

POSTHARVEST LOSSES VERSUS STORE-TIME AND PRICE

In SSA, normally farmers have a minimum of seven months maize store-time between two yield seasons. Alternatively, some farmers sell their crops just a little while after harvest amounting for 54 and 38% to cater for domestic and school fees consecutively, even though maize prices increased meaningfully in the period of 180 days of storage (Abass et al., 2014). A different study conducted in Kenya links unpleasant selling price with poor storage facilities in the combination of improper storage store administration skills resulting in immediate sales after harvest (De Groote et al., 2013). This makes maize to fetch low price with regards to law of demand and supply: if demand decreases and supply remains unchanged, then it leads to lower equilibrium price and lower quantity. Therefore, an immediate sale after harvest justifies low profit. Promising store-time marketing model would stand as a way forward to maximize profit gained by farmers.

Furthermore, another survey conducted in Uganda to determine effect of store-time on price for small-holder farmers reveals a significant correlation between store-time and gained profit. From the study, it has been observed that majority of maize harvested in December 2013 was sold directly to moderate post-harvest losses, whereby, maize in the initial weeks of January 2014 expected range of UGX 480 and UGX 520 per kg, whereas manipulating the better storing equipment for three months far ahead, April 2014, around UGX 760 and UGX 820 (Costa, 2014). Furthermore, an increment of 64% will be raised as additional earnings for a particular family. Hence, accessibility to proper storage facilities would improve farmers' waiting-time as means of solving maize price fluctuations and generating high profit.

In addition, as maize becomes scarce its price shoots up, as it has been validated by Chapoto and Jayne (2009) showing that; in Malawi real maize prices typically double in 24 weeks after harvesting season. Didier et al. (2013) conclude that, price variation drives the storage decision. From the study, 1% increase of the expected price variation increases the average quantity stored by 8.4 kg, with p-value less than 1%. Therefore, the household could increase profits by holding maize stocks until later in the marketing year because the market price

would rise accordingly as maize becomes scarce. This validates long maize-store-time against immediate sales after harvest. Moreover, devaluation of maize grain quality in the cause of PHL leads to price discount as pointed out by Didier (2013) that is, 1% rise in kernel injury leads to down price for about 0.32%. Findings from this study are applicable to other SSA countries with similar pest damages and price trends as in Benin. These potential losses in value might bring a substantial difference in monetary expressions to a family's livelihood. Hence, it justifies the improvement of storage structures together with store-time so that crops may fetch better prices and generate more income. The present review suggests that, resilient postharvest strategies together with an improved storage methods need to be established and defended with a reasonable store-time to secure both income and nutrition security in the postharvest period. These would serve as farmers' decision supporting tools on input-output relationship before investment.

MAIZE VALUE CHAIN IN SSA

Research and development as a main actor along maize value chain transforms knowledge into tangible assets, that is, improved seed varieties, fertilizer, pesticides, storage techniques etc. Adaptation and adoption of various technologies/innovations by producers result in surplus yield which creates a need for storage facilities from both public and private investors so as to regulate maize prices. Furthermore, maize marketing is said to be accomplished if and only if the produces reach final users that is consumers, animals feed, breweries industries etc. There comes a need for grain traders undertaking either exportation or importation. Stakeholders along maize value chain interact freely. Basically, enormous share of maize produced in SSA is locally consumed; this gives domestic market high potentiality. Alternatively, maize is subjected to international trade fall under international market conditions- demand and supply which influences domestic prices. As part of price regulation, government imposes import tariffs to protect domestic producers from lowly priced maize imports. Taking maize as an industry, it thus becomes essential source of foreign exchange through exportation of maize and its products. This fact raises concerns about the improvement of marketing setup and agro-logistics on main maize producing regions within SSA (Figure 2).

Maize marketing model in SSA

In SSA, maize prices are highly determined by market forces (demand and supply), yet maize shortages and maize price instability persist (Chapoto and Jayne, 2009). A lower maize price definitely affects all households that

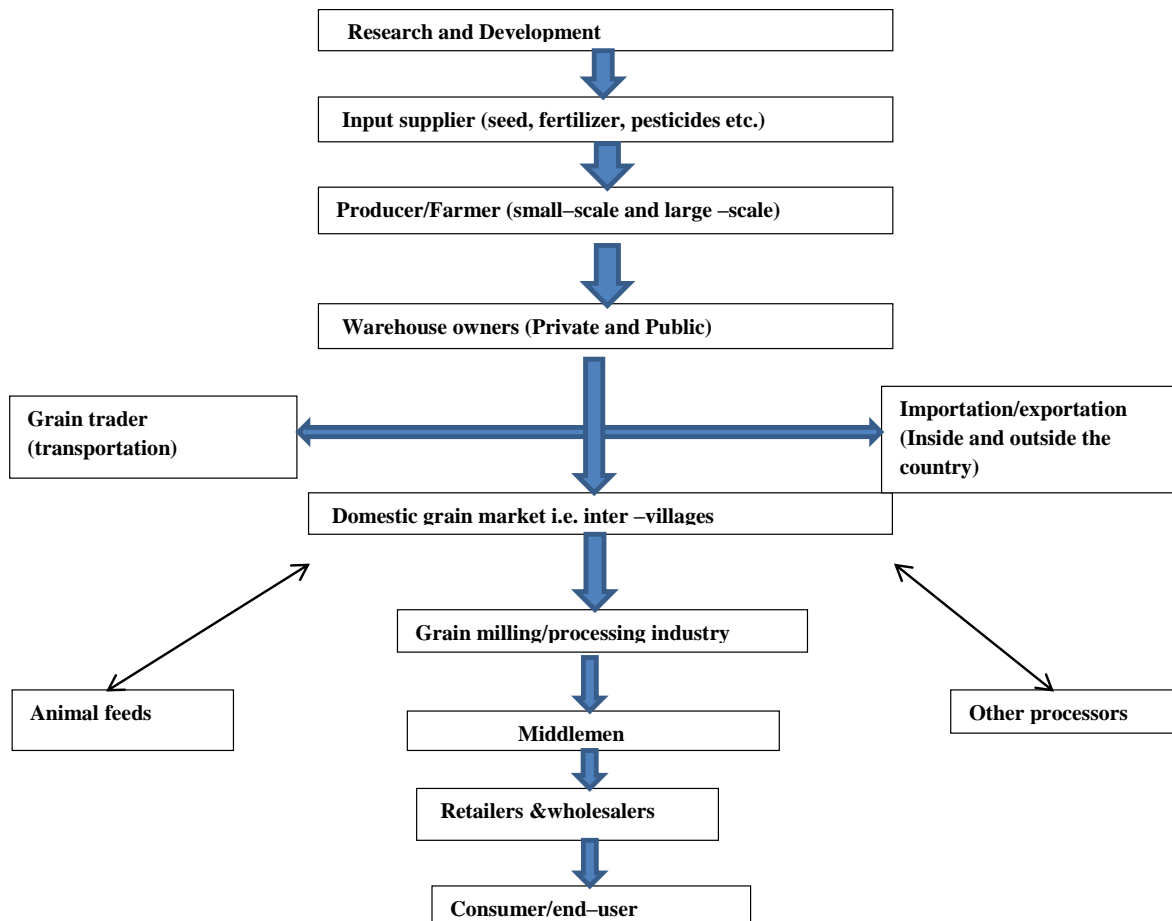


Figure 2. Illustrates the hypothetical maize value chain framework.

participate in maize markets both positively and negatively. In SSA maize profitability is regularly a gathering of carrying costs, capital rewards, and transactions costs. Maize three-dimensional market assimilation research in Malawi and Zambia (Goletti and Babu, 1994; Chirwa, 1999; Tostao et al, 2006; Abdulai, 2007; Myers, 2013; Burke, 2012; Mason et al, 2012; Ricker-gilbert et al., 2013) and for the wider region (Rashid, 2010; Mulenga and Campenhout, 2008) are mostly reliable in their findings that; maize markets are soundly well incorporated to the extent that they are suitable and their efficiency increases over time with decreasing marketing costs. This is to say; with the aid of a well-established marketing model the mentioned achievement would become more consistent in SSA resulting in commercial farming.

Taking Tanzania as an example of SSA countries, given its advantageous status in geographical location, that is, sharing border with Kenya taking advantage of weather variation impacts county trade off associates. Ahmed (2013) reports that maize trades would stand as foremost source of income. Following Kilima et al. (2008) line of thinking, trade is an essential element in

moderating price volatility across regions, leading to much investment and future maize sub sectorial growth. Through efficient spatial arbitrage, the risk of crop failure in some regions is shared over a large market area, leading to price stability and shortage of food insecurity (Tostao et al., 2006). Hence, it becomes a good approach in economic wealth distributions and income inequality gap removal. Therefore, in modeling the effect of store-time on maize prices (specifically in *spatial-temporal* scenarios), that is, linkage between domestic prices (inter-village) and prices in regional markets (across region) should be accounted well to justify their linkage considering positive association among price and market participation. The implication is that, effectiveness of price incentive in maize marketing model is highly influenced by small-holder farmer's store-time and market spatial integration. Based on a research conducted in Malawi by Chirwa et al. (2010), sum of justifications pointed out increased maize prices in the face of growth production:

(i) Increased maize exports and purchases for the strategic grain reserve;

- (ii) Rising real household income;
- (iii) Increased storage losses according to long store-time

From a business perspective, concentration of very few sectors in the marketing channels will definitely rise the rate and proportion of price response (Miller and Hayenga, 2001), which results in long maize store-time with a significant contribution to PHL. Therefore, maize-store time and its marketing environment should be modeled to allow a reasonable store time for a profitable return to maize investment. Furthermore, the export ban policy on raw maize for SSA should be discouraged regardless of its short term benefit that is domestic price regulation, until farmers will be fully equipped with value addition skills both technically and financially, taking maize as a raw material for animal feed supplements industries, breweries, maize oil making industries, etc... Basically, export ban reduces farmers' revenue besides returns to investment, hence disincentive to maize marketing participation.

Post-harvest loss management strategies in Sub-Saharan Africa

There are several models which are mainly specific for individual countries in the SSA. For instance, in Ethiopia, farmers store their cereals using bags in house, heaped in house, metallic silo, elevated storage platform, unprotected pile and other traditional methods (Hengsdijk and de Boer, 2017). In the same country, a common maize-based postharvest model used involves storing maize together with teff followed by a single time application of pesticides, which minimize storage cost, based on the fact that, insecticide is recommended to be applied after every three months of storage. Such strategies appear to protect 76% of the stored grains losing only 24% mainly due to chemical residue and discoloration (Hengsdijk and de Boer, 2017). In Rwanda, a three years (2010-2013) project named Post-harvest and Agribusiness Support Project (PASP) funded by USAID and IFAD, among other objectives post-harvest management model was the focus; the developed strategy was provision of stable market soon after harvest through private sectors and national grain reserve; at the same time storage facilities were kept clean and in good conditions, thus resulting in postharvest loss dropout from 30 to 10%. The model of operation was rural cooperatives and the group members were the main project beneficiaries, whereby non-members can access the facilities with double price (IFAD, 2013). Regardless of some other project achievements, the strategy cannot be adopted as a successful one for it favors minority instead of national wise based on the fact that, post-harvest loss is a national issue rather than individual one.

In a research carried out in Tanzania by Daminger et

al. (2016), it has been observed that the postharvest resilient strategy ought to be an effective utilization of Triple layer bags (PICS bags), considering its effectiveness in post-harvest loss reduction. Studies reported PICS bags efficiency reduces grain loss by over 90%. Contrarily, the strategy cannot be implemented built on the basis that, Tanzania farmers are more conscious of the present gain and loss rather than future one that is losing \$10 today "aches" more than losing \$10 some days later to the extent that, they are even willing to lose much in the future for the expense of present gains. This scenario has major implications on the proposed resilient strategy based on their prices, whereby one PICS bag costs five times the normal poly bag irrespective of its effectiveness in minimizing post-harvest loss (5000 Tsh vs. 1000 Tsh). Thus, growers might be willing to shift into PICS bag so they can earn more, but the return to investment stands as an obstacle, as investment will not pay off until the second or third year of investment. For this, the strategy cannot be taken as a resilient one.

Furthermore, studies directed on marketing model and store-time are highly important to maize production as an investment considering its potentiality as cash crop as well as food crop. Seeing climatic changes as a big threat to SSA food security, it is necessary for continent policy makers and other stakeholders to invest on the cheap and friendly resilient strategies to minimize maize post-harvest loss with clear integration of marketing models and store-time. There should be regular interactions between Research and Development and farmers as main beneficiaries. In addition, most of the prior studies have been carried out on influences of other factors in post-harvest loss with no attention on economic factors especially marketing models and store-time which are crucial aspects in regulating maize grain supply.

CONCLUSION

In the developed world, post-harvest loss is highly concentrated in the latter stages of the production chain that is distribution and consumption, contrary to SSA whereby, most post-harvest losses happen during harvesting, post-harvest handling and on store. Advisably, stakeholders and investors along maize production pipeline should focus much on capacity building to small scale-farmers on proper post-harvest handling practices; subsidize the improved storage facilities such as metal silos, plastic silos, airtight bags and hermetic shells in order to improve farmers' accessibility. Normally, storage structures are purchased shortly before harvest time; in fact at this time farmers get small cash, while the marketing prices of PICS bags are high compared to traditional storage bags hence diminishing demand for PICS bag. The situation reverses farmers' income cycle, whereby during boom period farmers have no need of PICS bag regardless of their

prices. To cut down this trend, PICS bag provision should be regarded among other agricultural inputs under input subsidy scheme to boost its accessibility with affordable prices. This will enable farmers to plan their purchase well in advance prior to harvest. There should be deliberate financial schemes as a source of fund for agro-dealers as key distributors for earlier mentioned post-harvest loss technologies to catalyze farmers' access to PHL strategies. Effort should be made to change farmers' mindset toward PICS bag initial investment cost in terms of not only its long life span (three years) but also efficient in post-harvest loss minimization in favor of the conversional bags considering purchasing cost, pesticide cost, complexity in application which needs to be accounted for among other costs. Utilizing these types of behavioral solutions may increase uptake of the PICS bag and other improved storage structures as solution toward post-harvest loss in store-time and marketing model perspectives.

CONFLICT OF INTERESTS

The authors have not declared any conflict of interests.

REFERENCES

- Abass AB, Ndunguru G, Mamiro P, Alenkhe B, Mlingi N, Bekunda M (2014). Post-harvest food losses in a maize-based farming system of semi-arid savannah area of Tanzania. *Journal of Stored Products Research* 57:49-57. <https://doi.org/10.1016/j.jspr.2013.12.004>
- Abdulai A (2007). Spatial and Vertical price transmission in food staples market chains in Eastern and Southern Africa: What is the evidence? Paper Presented at the FAO Trade and Markets Division Workshop on Staple Food Trade and Market Policy Options for Promoting Development in Eastern and Southern Africa, Rome, March 1-2, 2007, (January 2007).
- Ahmed AD (2013). Effects of financial liberalization on financial market development and economic performance of the SSA region: An empirical assessment. *Economic Modelling* 30(1):261-273. <https://doi.org/10.1016/j.econmod.2012.09.019>
- Daminger A, Datta S, Guichon D (2016). Reducing Post-Harvest Loss - A behavioral Approach, 15. Retrieved from http://www.ideas42.org/wp-content/uploads/2016/10/PostHarvestLoss%7B_%7DFINAL.pdf
- Amani H (2004). Agricultural development and food security in sub-Saharan Africa Tanzania Country report. Economic and Social Research Foundation (ESRF), (August). Retrieved from http://www.sarpn.org/documents/d0001583/FAO2005_Casestudies_Tanzania.pdf
- Ariño A, Juan T, Estopañan G, González-cabo JF (2007). Natural Occurrence of Fusarium Species, Fumonisin Production by Toxicogenic Strains, and Concentrations of Fumonisin B₁ and B₂ in Conventional and Organic Maize Grown in Spain. *Journal of Food Protection* 70(1):151-156. <https://doi.org/10.4315/0362-028X-70.1.151>
- Aulakh J, Regmi A (2013). Post-harvest food losses estimation-development of consistent methodology. First Meeting of the Scientific Review Committee of the Food and Agricultural Organization of the UN, 2050:1-34.
- Basavaraja H, Mahajanashetti SB, Udagatti NC (2007). Economic Analysis of Post-harvest Losses in Food Grains in India: A Case Study of Karnataka. *Agricultural Economics Research Review* 20(June):117-126.
- Blackie MJ (1990). Sufficiency and policy in East and Southern Africa. 15(5):383-394.
- Boxall RA (1986). Tropical Development and Research Institute A critical review of the methodology for assessing farm-level grain losses after harvest. Report of the Tropical Development and Research Institute, G191, viii + 139pp. <http://gala.gre.ac.uk/10793>
- Boxall RA (2002). Damage and loss caused by the Larger Grain Borer *Prostephanus truncatus*. *Integrated Pest Management Reviews* 7(2):105-121. <https://doi.org/10.1023/A:1026397115946>
- Burke WJ (2012). Maize production in zambia and regional marketing: input productivity and output price transmission. Michigan State University. Agricultural, Food and Resource Economics.
- Cairns-Fuller V, Aldred D, Magan N (2005). Water, temperature and gas composition interactions affect growth and ochratoxin A production by isolates of *Penicillium verrucosum* on wheat grain. *Journal of Applied Microbiology* 99(5):1215-1221. <https://doi.org/10.1111/j.1365-2672.2005.02695.x>
- Chapoto A, Jayne TS (2009). The Impacts of Trade Barriers and Market Interventions on Maize Price Predictability: East Lansing, Michigan P 1039.
- Chirwa EW (1999). Food marketing reforms and integration of maize and rice markets in Malawi. Chancellor College Department of Economics Working Paper WC/05/99. University of Malawi, Zomba, Malawi.
- Chirwa EW, Matita M, Dorward A (2010). Factors influencing access to agricultural input subsidy coupons in Malawi pp. 1-7. <http://eprints.soas.ac.uk/id/eprint/16732>
- Christensen CM (1957). Deterioration of stored grains by fungi. *The Botanical Review*, 23(2):108-134. <https://doi.org/10.1007/BF02930521>
- Christensen CM, Kaufmann HH (1969). The role of Fungi in quality loss. Oxford University Press, London, Bombay, and Karachi, and in Canada by the Copp Clark Publishing Co. Limited, Toronto. Library.
- Costa SJ (2014). Reducing Food Losses in Sub-Saharan Africa (improving Post-Harvest Management and Storage Technologies of Smallholder Farmer, An "Action Research" evaluation trial from Uganda and Burkina Faso. August 2013 – April 2014. Kampala., pp 22.
- Cowley RJ, Howard DC, Smith RH (1980). The effect of grain stability on damage caused by *Prostephanus truncatus* (Horn) and three other beetle pests of stored maize. *Journal of Stored Products Research* 16(2):75-78. [https://doi.org/10.1016/0022-474X\(80\)90041-7](https://doi.org/10.1016/0022-474X(80)90041-7)
- Proctor DL (1994). Grain storage techniques Evolution and trends in developing countries. (D.L. Proctor, Ed.). Rome.
- De Groote H, Kimenju SC, Likhayo P, Kanampiu F, Tefera T, Hellin J (2013). Effectiveness of hermetic systems in controlling maize storage pests in Kenya. *Journal of Stored Products Research* 53:27-36. <https://doi.org/10.1016/j.jspr.2013.01.001>
- Dick K (1988). A review of insect infestation of maize in farm storage in Africa - with special reference to the ecology and control of. The Scientific Unit of the overseas Development Administration. Retrieved from <http://gala.gre.ac.uk/10351>
- Didier K (2013). Effects of pest damage and grain management practices on storage behavior and market prices. Purdue University.
- Didier K, Ricker-Gilbert J, Alexander C, Tahirou A (2013). Effects of Storage Losses and Grain Management Practices on Storage: Evidence from Maize Production in Benin. *Agricultural and Applied Economics Association's 2013 AAEA and CAES Joint Annual Meeting*, Washington, DC, August 4-6, 2013., pp. 1-37. <https://doi.org/10.1017/CBO9781107415324.004>
- Dowell FE, Dowell CN (2017). Reducing grain storage losses in developing countries. *Quality Assurance and Safety of Crops and Foods* 9(1):93-100. <https://doi.org/10.3920/QAS2016.0897>
- Ennis AWB, Dowler WM, Klassen W, Science S, Series N, May FI (2016). Crop Protection to Increase Food Supplies 188(4188):593-598. Retrieved from <http://www.jstor.org/stable/1740170> Accessed:
- Food and Agriculture Organization (FAO) (2009). The state of food and agriculture: Livestock in balance. Food and Agriculture Organisation of the United Nations, Rome Rome. [https://doi.org/10.1016/S0140-6736\(75\)92740-3](https://doi.org/10.1016/S0140-6736(75)92740-3)
- Giorni P, Battilani P, Pietri A, Magan N (2008). Effect of awand CO2level on *Aspergillus flavus* growth and aflatoxin production in

- high moisture maize post-harvest. *International Journal of Food Microbiology* 122(1-2):109-113. <https://doi.org/10.1016/j.ijfoodmicro.2007.11.051>
- Goletti F, Babu S (1994). Market liberalization and integration of maize market in Malawi.pdf. *Agricultural Economics* 5150(94): 311-324.
- Green B (1977). Evaluation of Rodent Depredations to Crops and Stored Products 1. *EPPO Bulletin* 7:439-458.
- Haile A (2006). On-farm storage studies on sorghum and chickpea in Eritrea, *African Journal of Biotechnology* 5(17).
- Harris KL, Lindbald CJ (1978). *Postharvest Grain Loss Assessment Methods* pp. 7-158.
- Hengsdijk H, de Boer WJ (2017). Post-harvest management and post-harvest losses of cereals in Ethiopia. *Food Security* 9(5):945-958. <https://doi.org/10.1007/s12571-017-0714-y>
- Hodges R (1986). The Biology and Control of *Prostephanus truncatus* (Horn) (Coleoptera: Bostrichidae)- A destructive storage pest with an increasing range. *Journal of Stored Products Research* 22(1):1-14.
- Hodges R (1983). An outbreak of *Prostephanus truncatus* (Horn) (Coleoptera: Bostrichidae) in East Africa. *Protection Ecology*, 5(2):183-194.
- Hodges R, Bernard M, Felix R (2014). APHLIS – Postharvest cereal losses in Sub-Saharan Africa, their estimation, assessment and reduction. <https://doi.org/10.2788/19582>
- Hodges RJ, Buzby JC, Bennett B (2011). Postharvest losses and waste in developed and less developed countries: Opportunities to improve resource use. *Journal of Agricultural Science* 149(S1):37-45. <https://doi.org/10.1017/S0021859610000936>
- Holst AN, Meikle WG, Markham RH (2000). Grain Injury Models for *Prostephanus truncatus* (Coleoptera: Bostrichidae) and *Sitophilus zeamais* (Coleoptera: Curculionidae) in Rural Maize Stores in West Africa Grain Injury Models for *Prostephanus truncatus* (Coleoptera: Bostrichidae) and *Sitoph.* *Journal of economic entomology* 93(4):1338-1346.
- IFAD (2013). *Climate Resilient Post-Harvest and Agribusiness Support Project (PASP) including blended Adaptation for Smallholder Agriculture Programme Grant (ASAP)*. Kigali: UN International Fund for Agricultural Development.
- Isinika AC, Ashimogo GC, Mlangwa JED (2003). Africa in transition macro study, (August). <http://hdl.handle.net/20.500.12018/2744>
- Kaaya AN, Warren HL, Kyamanywa S, Kyamuhangire W (2005). The effect of delayed harvest on moisture content, insect damage, moulds and aflatoxin contamination of maize in Mayuge district of Uganda. *Journal of the Science of food and Agriculture* 85(15):2595-2599. <https://doi.org/10.1002/jsfa.2313>
- Kilima FTM, Chung C, Kenkel P, Mbiha ER (2008). Impacts of market reform on spatial volatility of maize prices in Tanzania. *Journal of Agricultural Economics* 59(2):257-270. <https://doi.org/10.1111/j.1477-9552.2007.00146.x>
- Koehler B (1938). Fungus Growth in Shelled Corn As Affected By Moisture. *Journal of Agricultural Research* 56(4): 291–307.
- Lipinski B, Hanson C, Lomax J (2013). Reducing Food Loss and Waste. *Creating a Sustainable Food Future*, (June), pp. 1-40. https://doi.org/10.2499/9780896295827_03
- Majumder S, Bala BK, Arshad FM, Haque MA, Hossain MA (2016). Food security through increasing technical efficiency and reducing postharvest losses of rice production systems in Bangladesh. *Food Security* 8(2):361-374. <https://doi.org/10.1007/s12571-016-0558-x>
- Mason NM, Jayne TS, Myers RJ (2012). Smallholder behavioral responses to marketing board activities in a dual channel marketing system: the case of maize in Zambia. In *Selected Paper prepared for Presentation at the International Association of Agricultural Economists Triennial Conference, Foz do Iguaçu, Brazil* (pp. 18-24). https://www.researchgate.net/profile/Nicole_Mason2/publication/254387555_Smallholder_Behavioral_Responses_to_Marketing_Board_Activities_in_a_Dual_Channel_Marketing_System_The_Case_of_Maize_in_Zambia/links/02e7e53ac8b9429e31000000.pdf
- Matthews G (2006). Integrated vector management: A new concept. *International Pest Control* 48(5): 241-242. <https://doi.org/10.1564/v24>
- Miller DJ, Hayenga ML (2001). Price cycles and asymmetric price transmission in the U.S. pork market. *American Journal of Agricultural Economics* 83(3): 551-562. <https://doi.org/10.1111/0002-9092.00177>
- Muir JF, Pretty J, Robinson S, Thomas SM, Toulmin C (2010). *Food Security: The Challenge of Feeding 9 Billion People*. Science, 327(5967):812-818.
- Mulenga S, Van Campenhout B (2008). Decomposing Poverty Changes in Zambia: Growth, Inequality and Population Dynamics. *African Development Review* 20(2):284-304.
- Myers RJ (2013). Evaluating the effectiveness of inter-regional trade and storage in Malawi's private sector maize markets. *Food Policy*, 41: 75–84. <https://doi.org/10.1016/j.foodpol.2013.04.007>
- Nyambo BT (2008). Post - harvest maize and sorghum grain losses in traditional and improved stores in South Nyanza District, Kenya. *International Journal of Pest Management* 39(2):181-187. <https://doi.org/10.1080/09670879309371787>
- Ranum P, Peña-Rosas JP, Garcia-Casal MN (2014). Global maize production, utilization, and consumption. *Annals of the New York Academy of Sciences* 1312(1):105-112. <https://doi.org/10.1111/nyas.12396>
- Rashid S (2010). Are Staple Food Markets in Africa Efficient? Spatial Price Analyses and Beyond. In *COMESA policy seminar" Food price variability: Causes, consequences, and Policy Options* pp. 25-26.
- Ricker-gilbert J, Mason NM, Darko FA, Tembo ST (2013). What are the effects of input subsidy programs on maize prices? Evidence from Malawi and Zambia. *Agricultural Economics* 44(2013):671-686. <https://doi.org/10.1111/agec.12081>
- Riekert HF, Berg JVD (2003). Evaluation of chemical control measures for termites in maize. *South African Journal of Plant and Soil* 20(1):1-5. <https://doi.org/10.1080/02571862.2003.10634896>
- Sekamatte BM, Ogenga-latigo M, Russell-smith A (2003). Effects of maize - legume intercrops on termite damage to maize , activity of predatory ants and maize yields in Uganda. *Crop Protection* 22:87-93.
- Singleton GR, Hinds LA, Krebs CJ, Spratt DM (2003). Rats, mice and people: rodent biology and management. January 2003, 548. https://www.researchgate.net/profile/Grant_Singleton/publication/272887645_Singleton_H
- Suleiman RA, Rosentrater KA (2015). Current Maize Production, Postharvest Losses and the Risk of Mycotoxins Contamination in Tanzania. 2015 ASABE International Meeting. American Society of Agricultural and Biological Engineers <https://doi.org/10.13031/aim.20152189434>
- Taylor P, Mdingi M, Mulungu LS, Massawe AW, Eiseb SJ, Tutjavi V, Kirsten F (2012). International Journal of Pest Management Assessment of rodent damage to stored maize (*Zea mays* L) on smallholder farms in Tanzania. *International Journal of Pest Management* 59(1):55-62. <https://doi.org/10.1080/09670874.2012.744495>
- Tefera T (2012). Post-harvest losses in African maize in the face of increasing food shortage. *Food Security* 4(2):267-277. <https://doi.org/10.1007/s12571-012-0182-3>
- Tefera T, Abass A (2012). Improved postharvest technologies for promoting food storage, processing , and household nutrition in Tanzania. *International Institute of Tropical Agriculture* (October), 19.
- Tefera T, Kanampiu F, De Groote H, Hellin J, Mugo S, Kimenju S, Banziger M (2011). The metal silo: An effective grain storage technology for reducing post-harvest insect and pathogen losses in maize while improving smallholder farmers' food security in developing countries. *Crop Protection* 30(3):240-245. <https://doi.org/10.1016/j.cropro.2010.11.015>
- Tostao E, Chung C, Brorsen BW (2006). Integrating the Structural Auction Approach and Traditional Measures of Market Power, (February), 1-36. Retrieved from <http://ideas.repec.org/p/ags/aaea06/21244.html>
- Verhuyt W (2010). Growth and production of maize: traditional low-input. UNESCO-EOLSS Publishers.
- Wagacha JM, Muthomi JW (2008). Mycotoxin problem in Africa: Current status, implications to food safety and health and possible management strategies. *International Journal of Food Microbiology* 124(1):1-12. <https://doi.org/10.1016/j.ijfoodmicro.2008.01.008>
- Waliyar F, Umeh VC, Traore A, Osiru M, Ntare BR, Diarra B, Sudini H (2015). Prevalence and distribution of aflatoxin contamination in groundnut (*Arachis hypogaea* L.) in Mali, West Africa. *Crop Protection* 70:1-7. <https://doi.org/10.1016/j.cropro.2014.12.007>

Warcup JH (1951). Soil-steaming: A selective method for the isolation of ascomycetes from soil. *Transactions of the British Mycological Society* 34(4):515–518. [https://doi.org/10.1016/S0007-1536\(51\)80035-4](https://doi.org/10.1016/S0007-1536(51)80035-4)

Wood TM, McCrae SI, Bhat KM (1989). The mechanism of fungal cellulase action. *Biochemical Journal* 43(260):37-43.

World B (2011). Missing Food :The Case of postharvest Grain Losses in Sub-Saharan African. The World Bank, 60371-AFR(60371), 116. <https://doi.org/Report No. 60371-AFR>.

Zhang Q, Muir WE, Sinha RN, Cenkowski S (1992). Heat production in wet wheat under adiabatic conditions. *Canadian agricultural engineering*, 34(3):233-238.

Full Length Research Paper

Postharvest loss assessment of maize (*Zea mays*) along its value chain in Nigeria

Kitinoja Lisa¹, Dandago Munir Abba^{2*} and Abdullahi Nura²

¹The Postharvest Education Foundation, P. O. Box 38, La Pine, Oregon 97739, USA.

²Department of Food Science and Technology, Kano University of Science and Technology, Wudil P. M. B. 3244 Kano, Kano State, Nigeria.

Received 22 November, 2018; Accepted 25 December 2018

Maize is the third most important cereal and staple globally. Poor agricultural policies and funding are the major problems of agriculture in Nigeria. This work was aimed at studying maize postharvest losses through identification of causes and sources. Data were gathered via Commodity Systems Assessment Methodology which includes 26 components, structured interviews and protocols for measuring quantity, quality and economic losses. Information on marketing, storage, handling, production and pre-production was obtained through interviews, observations, measurements and literature. Results of the study showed that cultural practices for maize vary from region to region and this affects the quality and quantity of maize. Poor quality seeds and fertilization have effects on the quality of the harvested crop. Maize is sundried on farm prior to sale. Quality and cob size affect farm gate prices. Farmers were unaware of postharvest losses because the harvested crop was not sorted before sale. Factors identified to affect maize losses at farm are; production constraints, improper drying, lack of grades and lack of storage. On farm postharvest losses were measured to be 13%. Mechanical damages during handling and transportation account for 2 to 3.5%. An average loss of 15% was recorded across the value chain.

Key words: Postharvest, maize, commodity, crop, quality, storage.

INTRODUCTION

Maize is an important food and fodder crop in many countries (Cadoni and Angelucci, 2013). It ranks third globally in terms of production after rice and wheat. Nigeria is the second leading producer of maize in Africa but despite its high production, Nigeria's average maize yield is still among the lowest in the world.

Experts have reported that Nigeria could become the largest maize producer in Africa and one of the largest producers in the world without increasing the area under cultivation (SAHEL, 2017).

The majority of maize producers in Nigeria are smallholder farmers (male and female) producing more than 70% of the nation's maize. There are only a few large-scale producers (GIZ, 2013). Cultivation is highest in the northern part of the country especially in the states of Kano, Kaduna, Bauchi, Gombe, Adamawa, Taraba and Jigawa (BRIU, 2015).

In 2013, Kano and Kaduna states produced 12.1% of national maize supply (GIZ, 2013). Among the South western states, Ogun, Ondo and Oyo are the leading

*

producers of maize (SAHEL, 2017). The national requirement for maize is estimated at about 16 million tons, with the production of 10.3 million MT in 2013, supply deficit is about a shortfall of 5.7 million MT (NAERLS, 2014).

Since the report on Global Food Losses and Food Waste (FAO, 2011) reported that 1/3rd of all foods were being lost, and the World Bank (2011) "Missing Foods" report on storage losses of grains in Africa, many new reports have been published on the topic (APHLIS, 2014).

The many postharvest loss studies and crop loss assessments that have been published in recent years often use ad hoc measurements, survey questionnaires or interviews, and focus on measuring overall quantitative (physical, volume or weight) losses (APHLIS, 2014). Each researcher has developed their own data collection instruments for different crops and target populations, and has reported on recall of % losses or weight losses for the crop, generally reported as estimates or ranges. PHL data is rarely available on the quantitative losses being experienced at the different levels of the value chain, standard deviations for reported loss levels, characteristics of qualitative losses, value of economic losses or other parameters related to food security such as nutritional losses.

Affognon et al. (2015) reviewed postharvest loss reports generated in some African countries and found out most had to be eliminated because they provided unreliable data. Affognon et al (2015) further found out that most of the available historical data was focused on storage weight losses for maize and therefore recommended expanding future postharvest loss assessment studies. APHLIS (2015) reported the estimated postharvest losses of maize in Nigeria according to states.

The objectives of the CSAM study were to identify and quantify the main causes and sources of food loss in the postharvest chain from the harvest to the retail market in major maize production states of Kano and Ogun. The analysis identifies where farmers and traders are losing the most quantity, quality and economic value, and identifies appropriate interventions for reducing these losses.

MATERIALS AND METHODS

The field work for this study was conducted between July and August, 2017 in Kano and Ogun states using Commodity Systems Assessment Methodology (CSAM), recently updated by postharvest trainers at IICA and PEF (LaGra et al., 2016). The study was done as part of an Agribusiness Associates Inc. project funded by the World Bank Group.

A CSAM study begins with a literature review of published articles and unpublished documents, review articles and government reports. CSAM is a systematic process of using survey questions, interviews, observations and field measurements to collect data on the key aspects of the value chain, including preproduction, production, postharvest handling and marketing. It

considers the entire commodity system, from planning and production to processing and marketing, but focuses heavily on the postharvest and marketing aspects in order to determine the relative costs and benefits of any potential or observed changes in handling practices, containers, value addition or marketing practices.

For this study, data on the maize value chain was collected via literature review, interviews following a simplified set of written questions targeted to the crop, observations of the harvest and postharvest handling practices, and direct measurements in the field. Questions related to production were asked mainly to farmers; traders and marketers were asked about postharvest handling and marketing and researchers, project staff and/or extension workers were questioned about the entire commodity system. CSAM interviews were conducted with 10 to 15 persons via a stratified sample of known crop experts, extension workers, farmers, traders, storage operators, processors and marketers.

Additionally, the field teams utilized standardized worksheets for on farm, storage, wholesale and retail market data collection on postharvest losses, quality characteristics, market value changes, and a worksheet on the costs/benefits of potential changes in practices. The general process of the field-based assessment was to sample postharvest losses for a random selection of 10 farms, 10 storage facilities, 10 wholesale markets and 10 retail marketing sites via direct measurements, questions and observations.

Tools used during the CSAM studies included: Digital scale (5 kg capacity); hanging scale (30 kg capacity); digital temperature probe; digital camera; digital hygrometer and set of data collection worksheets with protocols.

Data collection measurements are designed to be simple and non-destructive whenever possible. For example, quality characteristics are determined via sorting a random sample of 20 cobs or kernels into pertinent categories (defects, appearance, damage, decay, etc.). The undamaged maize can then be returned to the farmer or vendor.

Data analyses are likewise kept as simple as possible when conducting a CSAM study. Data entry is via a simple spreadsheet that matches the data collection worksheets, and requires calculations of sums, ranges, averages and standard deviations.

RESULTS AND DISCUSSION

The following is a summary of the key findings on maize postharvest losses and overall results of the CSAM studies (Tables 1 and 2).

Cultural practices

The cultural practices for maize production vary from one region to another in Nigeria and this affect the quality and quantity of the commodity produced. During field visits in Ogun state, the team observed that the majority of farmers do little or no fertilization at all, unlike in Northern part of Nigeria where maize is believed not to do well without fertilizer. The harvested crops were mostly unsorted and so farmers were largely unaware of any postharvest losses. Harvest losses can be due to missing produce on the plant, dropping cobs in the field, and discards due to obvious pest damage.

Maize is dried in the sun on the farm prior to sale. Quality at harvest (defects, decay and/or damage), size of cobs and moisture content all affect farm gate prices.

Table 1. Summary of general information for the maize commodity system assessments in Nigeria.

Country	Farms	Storage	Wholesale	Retail
	N=10	N=10	N=10	N=10
Nigeria	Ogun State (southern)	Kano State	Ogun State markets operate for a few weeks after harvest	Ogun and Kano States
	Harvest in July-Aug	Storage in 100kg woven sacks.	Kano area grain markets (northern)	No grading or retail pricing by quality grade.
	Nigeria average yield = 1.84 MT/ha	Sites included one 20 MT	Operate year round	Price range N15,000 to 17,000/100 kg
	Farm size: 1 to 5 ha	Metal silo	Some cleaning, but no drying, sorting or grading	100 kg is an estimated weight of one sack (sold by volume)
	CSAM average measured yield: 5 MT/ha	Storage period: Range of 5 to 10 months (kernels) or 4 to 9 months (cobs)	Maize sold as cobs and kernels	
Produce both white and yellow maize		Average temperature of air = 31.3°C		

Table 2. Summary of the CSAM finding summarizing the causes and sources of losses for Maize in Nigeria.

CSAM Components	Interviews	Observation	Comparison to Best Practices
Planning/ Preproduction	Farmers report Saving their seed for the next season	Nil	Use of good quality seeds provides higher yields
Production	Few farmers use appropriate levels of fertilizers	Pesticides use was spotty or improperly done Harvest not based on moisture content Maize fell off cobs, was dropped into the field, lost during harvesting Drying was done in open field or in heaps (exposed to rain, dust, and pests). Only high-quality maize was accepted for storage	Use of recommended inputs can improve yields and quality, reduce loss of kernels during harvesting Protection from pests Proper drying to M. C. of 14% for best quality and longest storage life
Marketing	Resale was often done without inspection of contents of the bags	Little or no sorting or grading during marketing Sacks were said to be 100 kg, but there was little or no weighing done before resale	Markets can better protect maize by providing shade and some type of cover (tarp or roof) to protect the crop from rain

The yield of maize for the farms in Ogun State visited during this study was higher than the

national average. The farm gate price is determined by the number of cobs or by the

volume sold, and the moisture content, but maize is not sold by weight.

Table 3. Postharvest system characteristics for maize in Nigeria.

Farm	N	RH%	Air Temp (°C)	Grain Temp (°C)	Package Protection* (sacks)	Sold as cobs or kernels	White or yellow maize
	10	70.7	28.9	28.5	2	Cobs	both
Wholesale market	10	57.9	31.3	29.7	2	3 as cobs/ 7 as kernels	Both
Storage	10	64.5	28.0	26.0	2	2 as cobs/ 8 as kernels	Both
Retail market	10	44.9	34.6	32.1	2	Kernels	Both

*1 = low, 3 = moderate, 5 = excellent protection.

Maize losses at wholesale markets

The assessment was done in the Kano area in Northern Nigeria, as this is the major maize wholesale, storage and retailing area while assessment of fresh cobs wholesale was done in Ogun state. Containers are standard 100 kg sacks for maize kernels while reuse old fertilizer or rice sacks for packaging maize cobs. A few small-scale wholesalers do shelling and/or cleaning as a value addition practice, using manual methods. Marketers complain about being at the mercy of middlemen regarding market prices.

Maize losses in storage

The assessment was done in the Kano area in Northern Nigeria, as this is the major maize wholesale, storage and retailing area. One of the ten storage facilities assessed offered storage in a well-ventilated metal silo. The standard sized sack was 100 kg of kernels. The storage period had a range of 5 to 10 months (for kernels) or 4 to 9 months (for the few who stored maize as cobs).

Maize losses at retail markets

The assessment was done in the Kano area in Northern Nigeria, as this is the major maize wholesale, storage and retailing area. There was no grading or pricing by quality grade at the retail level, but sometimes cleaning was done to remove debris. Damage or defects (especially small sizes) was related to reduce prices, but there were little or no reports of discards.

Percent postharvest losses and discarded maize

Postharvest losses (PHLs) measured in Nigeria on farm ranged from 7 to 23% (average 13%) loss or discarded during the harvest. Sorting discards at the storage and wholesale levels were low to none, and mechanical

damage in the assessed samples was 2 to 3.5% quality loss. At the retail level, there was no sorting. PHLs cannot simply be added across these value chain stages, due to the very wide range of losses measured in each sample. If the minimum levels of the range of measured PHLs are added up for the farm, storage, wholesale and retail sites, the total is 15%, which is the most conservative estimation of overall losses (Table 4).

On the 10 farms, the field team was able to collect and weigh the total amount of maize harvested, and collect and weigh the maize left in the field after the harvest. Based upon the average weight collected from 3 sample plots on each farm, 646 kg/ha was either left on the plants or discarded on the ground in the field. Therefore, the PHLs during the harvest was 13% of the total estimated harvest of 5 MT/ha. Lost or discarded maize was typically used for animal feed.

Postharvest quality and food safety

Maize quality characteristics were assessed during the CSAM studies, and found to be closely related to market value. Typical quality issues on the farm included: 1) Defects: unfilled cobs, darkening, shrivel, misshapen kernels, small kernels; 2) decay: fungi/mould and damage: mechanical injury, cracks, pest damage (army worms, weevils, stray animals).

During harvesting, maize was left in the open field under direct sunlight and during humid weather until harvesting is completed, thereby heating up the produce. Temperature is the most important environmental factor that influences the rate of deterioration of harvested produce. High temperatures recorded in Table 3 during harvest, storage and retailing will therefore reduce potential storage life. Most of the decayed maize was sorted out at the farm level and so does not reach the markets. The sacks used for maize transport are large and heavy. The farmers and traders do not weigh the full woven sacks, but generally estimate the sack as equal to hold 100 kg.

There is no local, regional or national standard for quality inspection carried out on farms and markets in the

Table 4. Summary of quality postharvest losses assessed for maize (% PHL, standard deviation).

Country	Farm N=10	Storage N=10	Wholesale N=10	Retail N=10
	13.3% (SD 1.8%) PHLs at harvest. Measured in 30 random plots.	Low or no report losses	Low or no reported losses, little or no sorting done at wholesale	0% reported losses
Nigeria	Average yield of 5 MT/Ha and losses of 646 kg/ha Drying is estimated to reduce the weight of the crop by 10% (typically sun dried on farm before delivery to storage or the market).	One storage operator (metal silo) reported 2% sorting losses prior storage	One wholesaler reported 5% sorting losses.	No sorting done at retail

Table 5. Postharvest losses (% percent defects, decay, mechanical damage and discards) measured for maize in Nigeria.

Farm	N	Avg time from harvest	% defects	% Decay	% mechanical damage	% sorted before sale	sorted out/discarded	Lost or discarded during the harvest
	10	0 h	17	4	4	Only 2 farms estimated 2% discards	Sorted;	Average 13% SD = 5 Range 7 to 23%
Wholesale market	10	24 h	8	1	3.5	No sorting		
Storage	10	Unknown	2	0	2	Only 1 operator estimated	sorted;	
Retail market	10	Unknown	12.5	1.5	9	No sorting		

study area. Farmers farming practices had tremendous effects on the quality of the produce. The quality of maize seeds used for planting by farmers in the study area was generally poor. They made use of seeds saved from their previous harvest, and replant each year without using improved seeds. These seeds have lost vigour and good quality characteristics with time.

Estimated value of postharvest losses of maize in Nigeria

If the maize crop in Nigeria is experiencing a conservative 15% loss in terms of quantity during the farm to market period, this equates to a loss in market value of at least 15%. If the annual production of maize is 10.8 million MT, at an average market value of N160/kg, 15% PHLs equate to a loss in potential market value of \$720 million per year (Tables 5 and 6).

Factors affecting maize losses

Earlier studies have reported on high postharvest losses in maize, and a host of factors that lead to losses. The Meridian Institute published a summary of the key production, postharvest and marketing impediments for

maize smallholder farmers for a project funded by the Gates Foundation for a study undertaken in East Africa (Meridian, no date). According to the CSAM study findings, these factors hold true for Nigerian maize farmers and traders as well. These factors include:

Production constraints

- 1) Few farmers use fertilizer or purchase improved seeds.
- 2) Uncertainty about rainfall (which affects returns)
- 3) Lack of access to credit

Lack of storage

- 1) Sharp seasonal fluctuations in maize prices particularly in remote areas suggest insufficient storage by farmers and traders.
- 2) Storage is limited by liquidity constraints, capacity, and high storage losses (storage losses are higher for maize than for other crops).

Fragmented sales by small numbers of farmers

- 1) Farmers are predominantly selling small amounts of

Table 6. Estimated value of postharvest losses of maize in Nigeria.

Annual production 2014	Market value Range (high quality)	Market value range (low) quality	Market value (average)	Annual economic loss in Naira (15% PHLs)	Annual Economic Loss in \$US
10.8 Million MT	N170/kg	N150/kg	N160/kg		
10.8 billion kg			N1,728 Billion	N259 billion	US\$720 million

360 Naira = \$US 1.

maize in the village to traders.

- 2) Aggregation is time consuming and costly, contributing to low farm prices.
- 3) Farmers lack information about prices in nearby markets and also lack cost-effective means of transporting maize individually.
- 4) Low levels of trust between farmers may limit collective sales or transportation.

Improper drying and lack of grades

- 1) Maize is often not fully dried at the farm nor is it fumigated, resulting in the need for further drying and sometimes fumigation by traders.
- 2) The amount of sorted out maize is higher if the harvest occurs during a rainy time (USAID 2012).
- 3) The absence of standardized grades requires the quality of produce to be manually checked. As a result of both of these factors, maize is repeatedly packed and unpacked during marketing, creating inefficiencies in the market chain.
- 4) Poor drying at initial stages in the marketing chain can result in high levels of aflatoxins (which cannot be visually observed).

Costs and benefits of improved practices and technologies for maize

A few recommended postharvest technologies for reducing losses in maize include:

- 1) Use of maturity indices during harvesting. In Nigeria, maize is harvested at various stages of moisture, which can lead to losses due to kernels dropping off (too dry) or to mouldiness (too wet). The offered farm gate prices will be lower than the potential market value of higher quality maize.
- 2) Use of improved storage bags. In Nigeria, Purdue Improved Crop Storage (PICS) bags, used for hermetic storage of maize and dry beans, are much more expensive than traditional woven polypropylene storage bags. "Imitation PICS" are available at a lower price, but their effectiveness is unknown. The PICS bags are triple

layered, made with a layer of solid plastic to seal out air in order to asphyxiate any insect pests that may be inside the bag of grain. Their use for maize storage in Kano can result in a small but immediate profit, regardless of the market price. If taken care of between uses, PICS bags can be reused for grain storage at least one more time, and they can keep maize safe from pests during a storage period of up to one year. Table 7 provides details on cost and benefits of using PICS bags for maize storage in Kano State, Nigeria.

Deterioration of maize is mainly affected by moisture content, temperature (grain and air), relative humidity, storage conditions, fungal growth, and insect pests (Suleiman et al., 2013). Exposure to higher RH after harvest can increase moisture content and this will negatively influence the physical and sanitary quality of maize (José et al., 2017). Presented in Table 3 are postharvest system characteristics for maize in Nigeria. Grain moisture content is among the most important factors that influence time needed for preservation as well as the whole health status of maize grain (Andrade et al., 2017; Bhandari et al., 2017; Mirna et al., 2007). High moisture level during harvest, storage and retailing is unfavourable and can minimize preservation ability of the grain.

Intensive respiration process prior to drying enables activities of microorganisms, and produce favourable medium (temperature raise, moisture raise and heat release) for storage pests (Volenik et al., 2007).

Polypropylene bags used for maize packaging in Nigeria provide poor protection during storage and this contributes to huge postharvest losses. Proper drying and use of hermetic packaging system were reported to provide good keeping quality after year storage under ambient storage conditions (Gopal et al., 2017).

Conclusion

There are no local, regional or national standard for quality inspection along the maize value chain. Defects found to affect postharvest quality and safety of both fresh cobs and dried kernels were; decay (mostly caused by fungi), mechanical injury, cracks, pest damage (army worms, weevils, stray animals), unfilled cobs, darkening, shrivel, misshapen kernels and small kernels (Table 5).

Table 7. Storage of maize in hermetic bags in Kano State, Nigeria.

Assume harvest 1000 kg	Current practice	New practice
Describe	Storage in ordinary 100 kg PP bag	Storage in improved PICS bags (hermetic storage)
COSTS	PACKING 100 kg in a bag 150 NGN per bag	Packing 100 kg 500 NGN per bag
Need 10 bags		
Relative cost	1500 NGN/1000 kg	5000 NGN/100 kg
Expected benefits		
% losses	2 to5%	<1%
Amount for sale	950 to 980 kg	990 kg
Value/kg	90 to170 NGN/kg	95 to175 NGN/kg
Total market value range	85,500 to166,600 NGN	94,050 to173,250 NGN
Highest Market value minus relative costs	165,100	168,250
Relative profit		3,150 NGN (US\$8.75)
ROI		Immediate profit by using PICS bags for storage. Bags can be used again, for a subsequent profit of 8,150 NGN per MT (US\$22.64)

The defects can be influenced by combination of high temperature and relative humidity, and poor transportation and storage system

Maize postharvest losses on Nigerian farms were found to be 13% (average). Mechanical damages during handling, transportation and transportation account for 2 to 3.5% quality loss in dried maize. An average of 15% loss was recorded across the value chain. If the annual production of maize is 10.8 million MT, at an average market value of N160/kg, 15% PHLs equate to a loss in potential market value of \$US 720 million per year.

Training farmers on the importance of using improved varieties, modern farming practices, understanding and applying the knowledge of maturity indices, good postharvest management, and use of improved containers and modern storage systems will minimise losses at all levels along the value chain.

CONFLICT OF INTERESTS

The authors have not declared any conflict of interests.

REFERENCES

- Affognon H, Mutungi C, Sanginga P, Borgemeister C (2015). Unpacking postharvest losses in Sub Saharan Africa: A Meta analysis World Development 66:49-68.
- Andrade JC, Goneli ALD, Filho CPH, Azambuja TMS, Barboza VC (2017). Quality of second-crop corn according to the period between harvest and drying. Revista Brasileira de Engenharia Agrícola e Ambiental. 21(11):803-808.
- APHLIS (2014). Postharvest Cereal losses in sub Saharan Africa, their estimation, assessment and reduction. Retrieved from www.aphlis.net on 11/08/17
- APHLIS (2015). Postharvest loss estimates Nigeria. Retrieved from www.aphlis.net on 11/08/17
- Bhandari G, Ghimire TB, Kaduwal S, Shrestha J, Acharya R (2017). Effects of storage structures and moisture contents on seed quality attributes of quality protein maize. Journal of Maize Research and Development 3(1):77-85
- BRIU (2015). Nigeria Agriculture sector report: Crop production. pp. 42.
- Cadoni P, Angelucci F (2013). Analysis of incentives and disincentives for maize in Nigeria. Technical notes series, MAFAP FA, Roma. Pp. 6-9 www.agricknowledge.org/download/5712m657h on 5/8/17.
- Food and Agriculture Organization (FAO) (2011). Global Food losses and Food wastes: Extent, cause and prevention. www.researchgate.net
- GIZ (2013). Value chain at a glimpse. Federal Ministry of Agriculture and Rural Development. Pp 12-16 Retrieved from www.share4dev.info/fmard/documents/5249pdf on 5/8/17
- LaGra J, Kitinoja L, Alpizar K (2016). Commodity Systems Assessment Methodology for Value Chain Problem and Project Identification: A first step in food loss reduction. San Jose, Costa Rica: IICA. P246. http://repiica.iica.int/docs/B4232i/B4232i.pdf
- Meridian Institute (No date). Science and Innovation for African Agricultural value chains. www.merid.org/media/files/projects
- Mirna V, Vlatka R, Irma K, Anita L, Darko K, Branimir S (2007). Influence of Relative Humidity and Temperature on the Changes in Grain Moisture in Stored Soybean and Maize. Agriculturae Conspectus Scientificus 72(3):215-219.
- NAERLS (2014). Maize Production Marketing, processing and Utilization in Nigeria. Extension bulletin. 217: 3- 24.
- SAHEL (2017). Maize: enhancing the livelihoods of Nigerian farmers. 14:1-2 http://www.sahelcp.com/wpcontent/uploads/2017/06/sahel_newsletter_volume_14.pdf.
- Suleiman RA, Rosentrater KA, Bern CJ (2013). Effects of deterioration parameters on storage of maize. Iowa State University Digital Repository 7-2013.
- United States Agency for International Development (USAID) (2012). Maize value chain in SADC region. Technical Report retrieved from www.saiia.org.za
- World Bank (2011). Missing Food: The case of Postharvest grain losses in sub Saharan Africa, www.openknowledge.worldbank.org

Related Journals:

